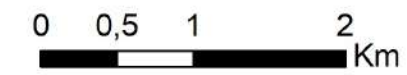


### Cobertura del suelo en el APA "Cuenca Media del Arroyo Solís Grande"




- A° Solís Grande
- Cuerpo de agua
- Curso de agua
- Zona de drenaje
- Humedal
- Campo natural inundable
- Campo natural
- Bosque nativo
- Cultivo agrícola
- Forestación
- Cantera
- Urbano
- Perímetro del APA
- Caminería

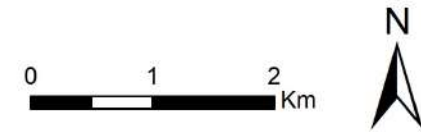


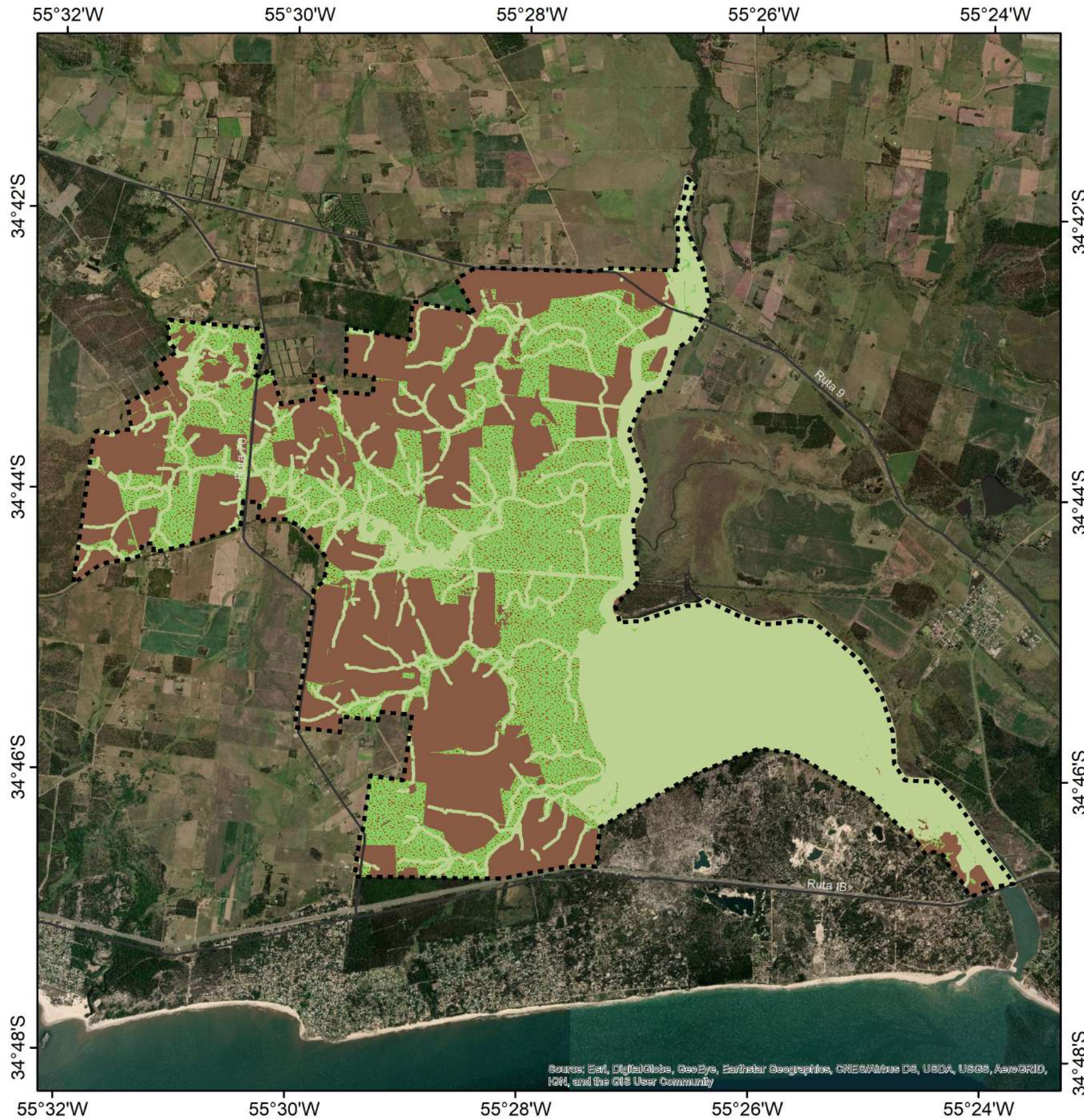
Source: Esri, DigitalGlobe, GeoEye, Earthstar Geographics, CNES/Airbus DS, USDA, USGS, AeroGRID, IGN, and the GIS User Community








### Padrones incluidos en el APA "Cuenca Media del Arroyo Solís Grande"

-  Padrones rurales del APA
-  Perímetro del APA
-  Rutas



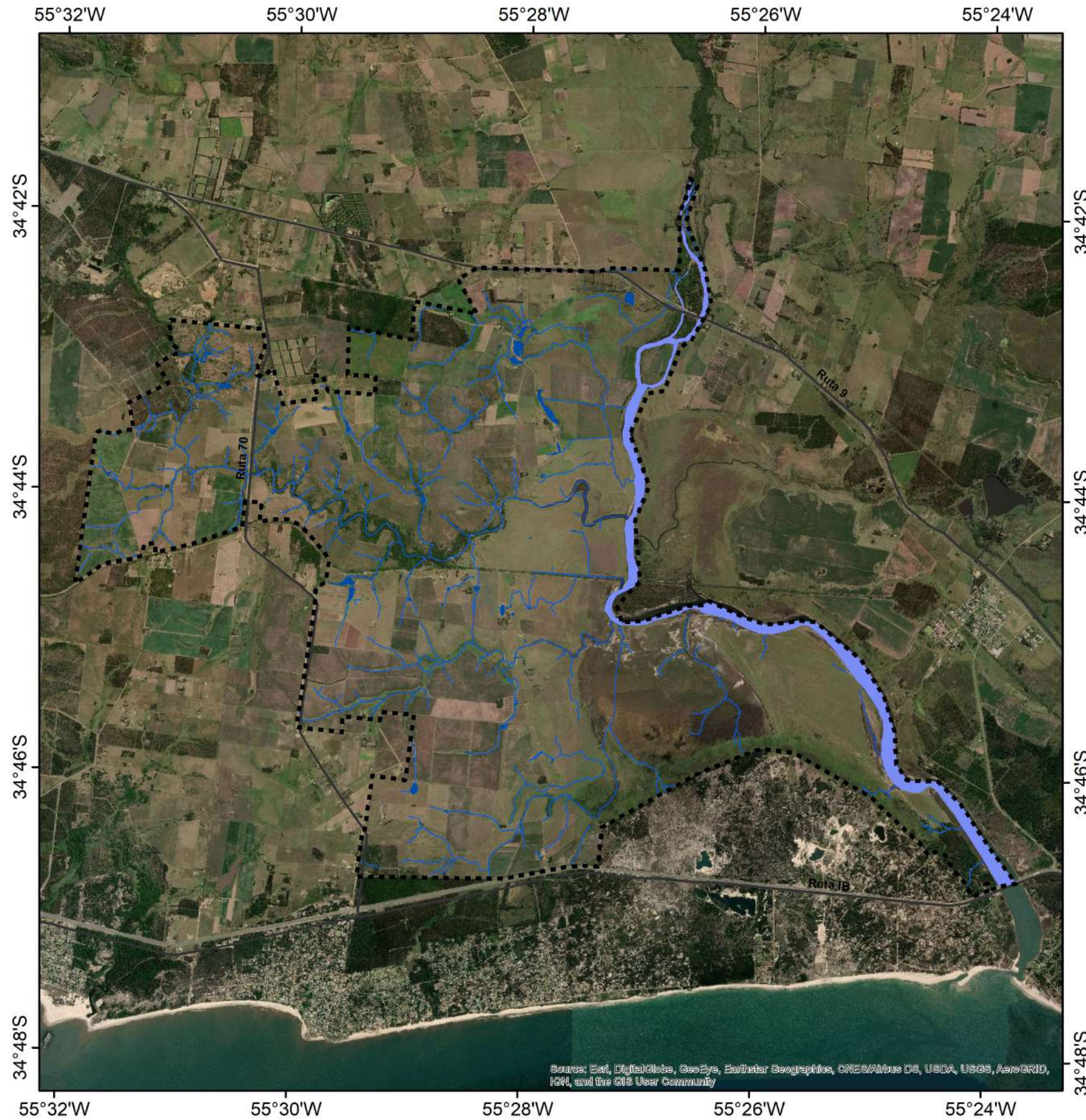


Zonificación propuesta  
para el APA "Cuenca Media  
del Arroyo Solís Grande "

-  Zonas de protección
-  Campo natural bajo pastoreo
-  Zonas de uso intensivo
-  Perímetro del APA
-  Rutas








Source: Esri, DigitalGlobe, GeoEye, Earthstar Geographics, CNES/Airbus DS, USDA, USGS, AeroGRID, IGN, and the GIS User Community

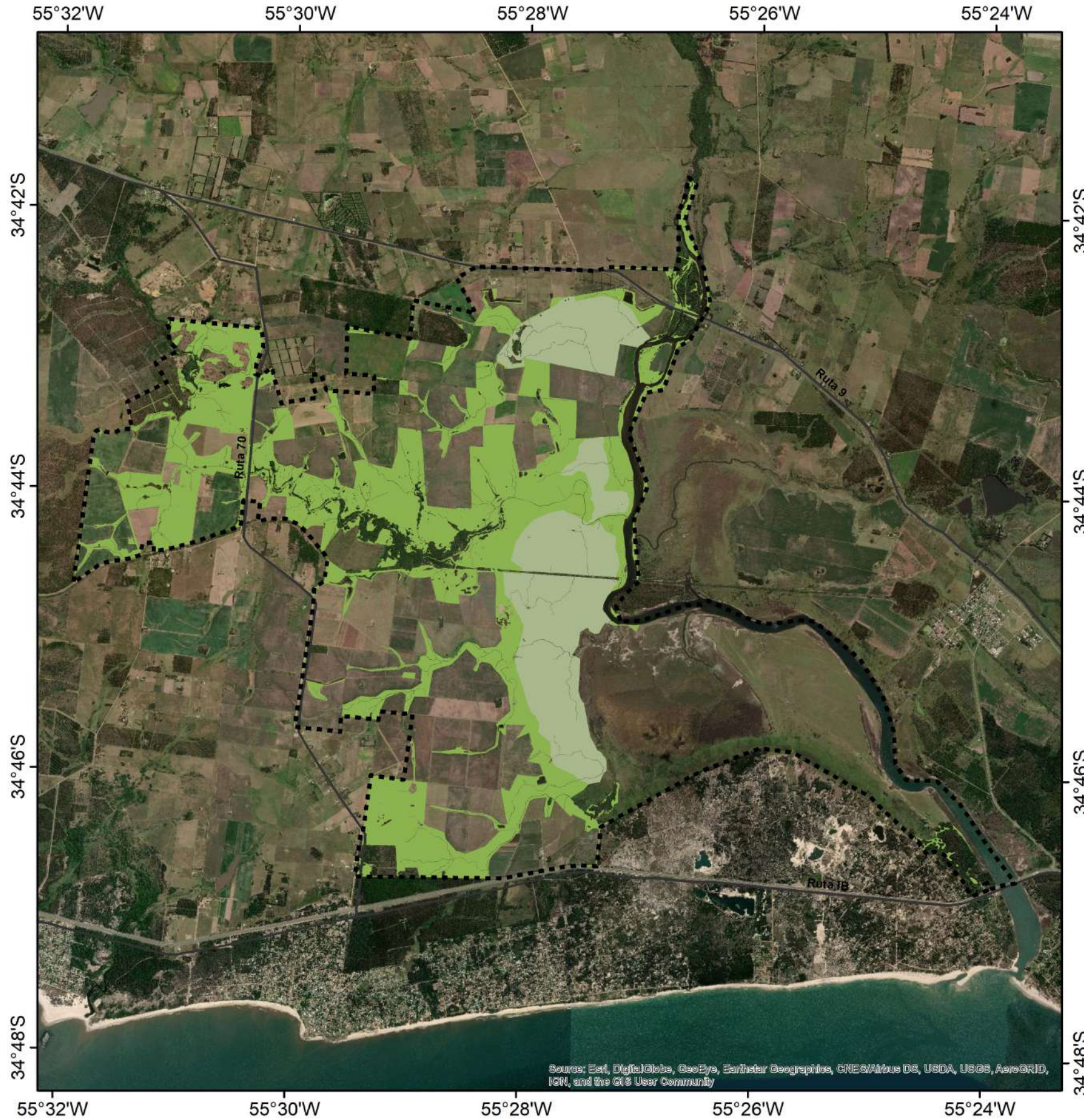


Source: Esri, DigitalGlobe, GeoEye, Earthstar Geographics, CNES/Airbus DS, USDA, USGS, AeroGRID, IGN, and the GIS User Community


**Objeto focal:  
AGUA DE BUENA CALIDAD**

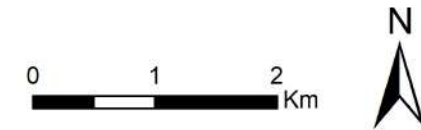
-  A° Solís Grande
-  Cuerpo de agua
-  Curso de agua
-  Perímetro del APA
-  Rutas





Objeto focal:  
**CAMPO NATURAL**

-  Campo natural
-  Campo natural inundable
-  Perímetro del APA
-  Rutas



Source: Esri, DigitalGlobe, GeoEye, Earthstar Geographics, CNES/Airbus DS, USDA, USGS, AeroGRID, IGN, and the GIS User Community



**Objeto focal:  
BOSQUE NATIVO**

- Bosque nativo
- Perímetro del APA
- Rutas

